



Connectors > Power Connectors > Rectangular Power > Rectangular Power Connectors

Product Type: **Housing** Housing
Type: **Receptacle** Connector
System: **Wire-to-Wire**

Number of Positions: **2,3,4,5,6**

Centerline (Pitch): **3 mm]**

Features

Product Type Features



Product Type	Housing
Housing Type	Receptacle
Connector System	Wire-to-Wire
Sealable	No
Connector & Contact Terminates To	Wire & Cable
Contact Type	Socket

Configuration Features

Number of Positions	2, 3, 4, 5, 6
Number of Rows	1

Electrical Characteristics

Operating Voltage	250 VDC
-------------------	---------

Contact Features

Contact Layout	Inline
Contact Retention	Without

Termination Features



Termination Method to Wire & Cable	Crimp
------------------------------------	-------

Mechanical Attachment

Connector Mounting Type	Cable Mount (Free-Hanging)
-------------------------	----------------------------

Housing Features

Centerline (Pitch)	3 mm[.118 in]
UL Flammability Rating	UL 94V-0
Housing Color	Black
Housing Material	Nylon 66/6

Usage Conditions

Operating Temperature Range	-40 – 105 °C[-40 – 221 °F]
-----------------------------	----------------------------

Operation/Application

Circuit Application	Power & Signal
---------------------	----------------

Industry Standards

CSA Rating	Certified
Glow Wire Rating	Standard Part - Not Glow Wire
UL Rating	Recognized
Agency/Standard Number	E28476
CSA File Number	LR7189
VDE Tested	Yes
Agency/Standard	CSA, UL

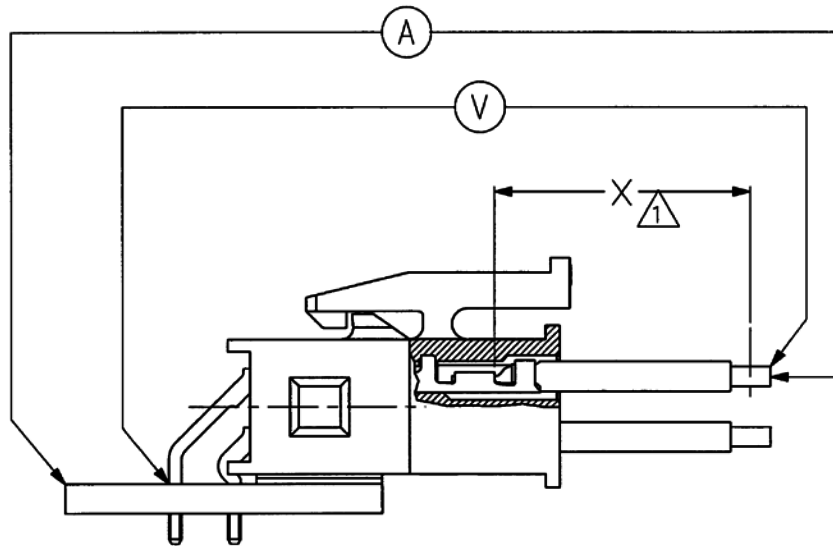
Packaging Features

Packaging Method	Tray
Packaging Quantity	2000

Product Compliance

[For compliance documentation, visit the product page on TE.com>](#)

EU RoHS Directive 2011/65/EU	Compliant
EU ELV Directive 2000/53/EC	Not Yet Reviewed
China RoHS 2 Directive MIIT Order No 32, 2016	No Restricted Materials Above Threshold
EU REACH Regulation (EC) No. 1907/2006	Current ECHA Candidate List: JUL 2019 (201) Candidate List Declared Against: JAN 2019 (197)



NOTE

Resistance due to X length of wire is to be removed from all readings.

Figure 3
Termination Resistance Measurement
Points

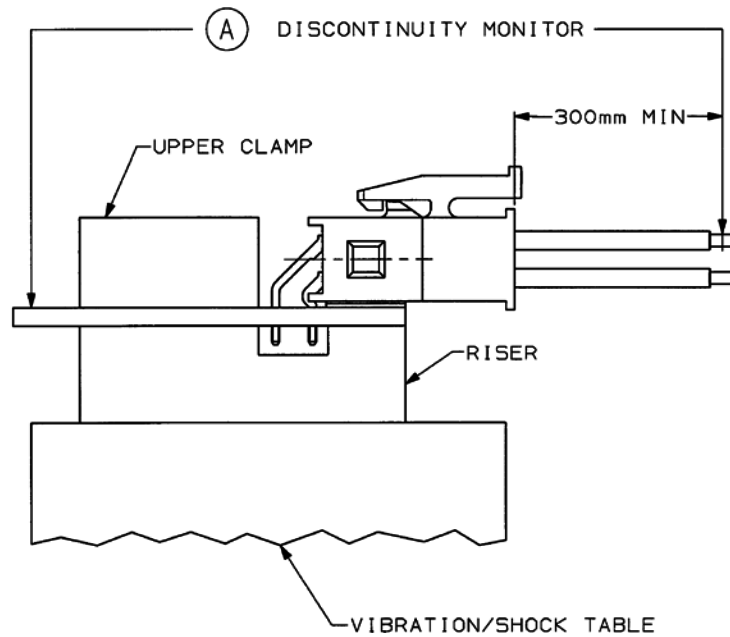


Figure 4
Vibration & Mechanical Shock Mounting
Fixture

